

0914-001

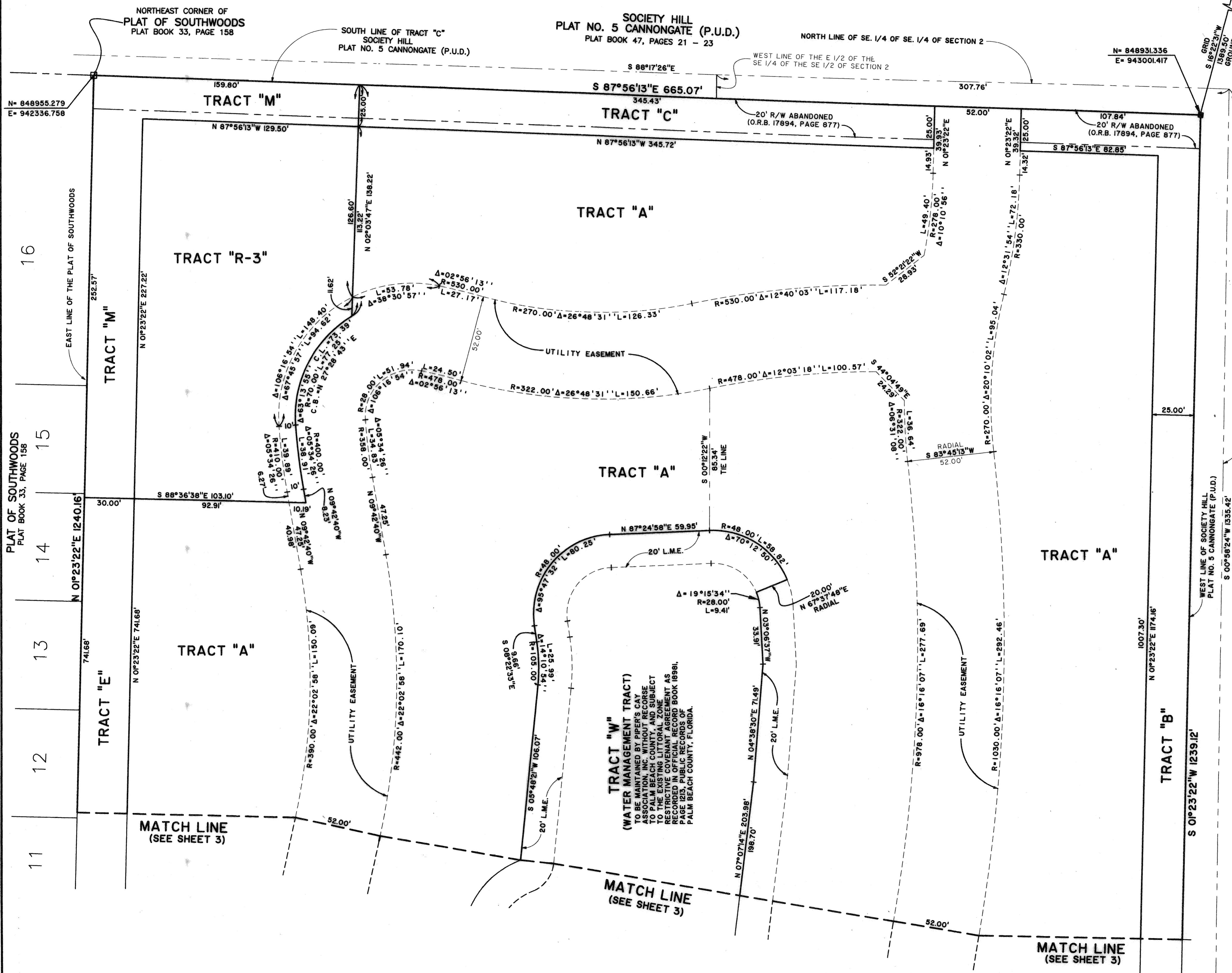
# PIPER'S CAY

WYNDAM II A PLANNED UNIT DEVELOPMENT  
BEING A REPLAT OF A PORTION OF MODEL LAND COMPANY SUBDIVISION  
OF SECTION 2, TOWNSHIP 44 SOUTH, RANGE 42 EAST, AS RECORDED  
IN PLAT BOOK 5, PAGE 80, PUBLIC RECORDS OF PALM BEACH COUNTY, FLORIDA.  
SHEET 4 OF 4 SEPTEMBER, 2005

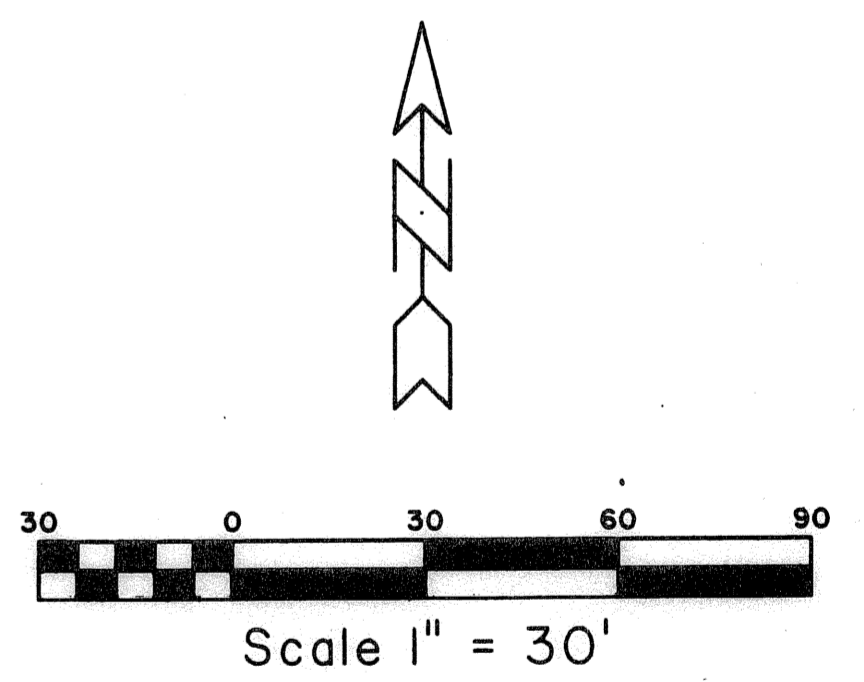
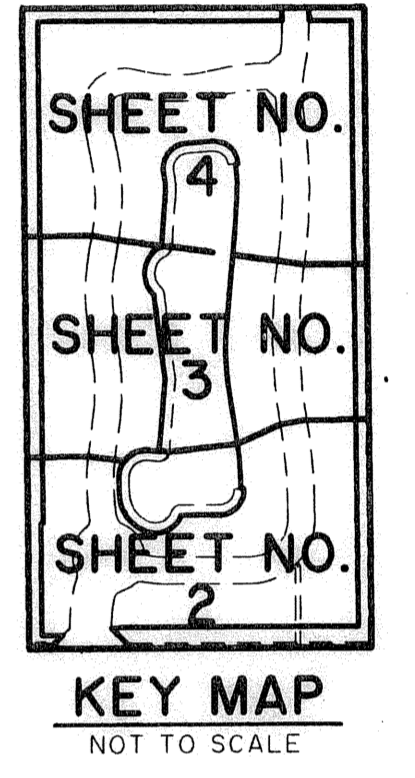
N= 853047.542  
E= 943456.419  
FOUND PALM BEACH  
COUNTY BRASS DISC  
HAV 80

N= 850264.517  
E= 943393.165  
FOUND PALM BEACH  
COUNTY BRASS DISC  
SUNNY LANE

N= 848931.336  
E= 943001.417

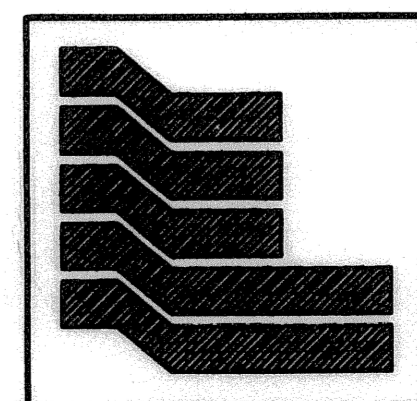


STATE OF FLORIDA  
COUNTY OF PALM BEACH  
THIS PLAT WAS FILED FOR RECORD AT \_\_\_\_\_  
M., THIS \_\_\_\_\_ DAY OF \_\_\_\_\_ 2005  
AND DULY RECORDED IN PLAT BOOK NO. \_\_\_\_\_  
ON PAGE \_\_\_\_\_  
SHARON R. BOCK  
CLERK AND COMPTROLLER  
BY \_\_\_\_\_ D.C.



**COORDINATE NOTE:**  
STATE PLANE COORDINATES SHOWN ARE GRID DATUM, NAD 83 1990  
ADJUSTMENT, FLORIDA EAST ZONE, COORDINATE SYSTEM 1983 STATE  
PLANE, TRANSVERSE MERCATOR PROJECTION  
LINEAR UNIT = US SURVEY FEET  
ALL DISTANCES ARE GROUND  
SCALE FACTOR = 1.00003527  
GROUND DISTANCE X SCALE FACTOR = GRID DISTANCE  
BEARING BASIS GRID ZERO ROTATION

SUBDIVISION PIPER'S CAY  
BOOK 106 PAGE 171  
FLOOD ZONE B FLOOD MAP # 185 B  
QUAD # 32 ZONING PUD  
SE ZIP CODE 33445  
TAZ 281 WYNDAM II  
PUD NAME



**Landmark Surveying & Mapping Inc.**  
1850 Forest Hill Boulevard  
Ph. (561) 433-5405 Suite 100 W.P.B. Florida  
LB # 4396

PIPER'S CAY

171